

Portchester Sailing Club

Vectis Rally and Race - Briefing Pack

Vectis Rally and Race

When - Sunday 14th August 2016

Time – Depart between 09:15 – 09:30

Where - Portchester to Seagrove Bay IOW

Arrival - at Seagrove – estimated 13:00 / 13:30

Departure – from Seagrove approx. 15:30

Return - to Portchester approx. 18:00

HW Portsmouth	09:34	3.8M
LW Ryde	14:23	1.9M



Portchester Sailing Club

Vectis Rally and Race

Full Race instructions are available on the Club Website

Go to Club Membership/Downloads

http://portchestersc.org/wp-content/uploads/2016/06/2016_Vectis_Race_Instructions.pdf

Current weather forecast is favourable for the Dinghies

Final decision will be taken at 08:30 on the day.

**Looking at the various forecasts it will be hot and sunny possibly up to 25C.
Winds however are light and variable in direction.**

Starting as a NNE coming round to an E possibly SE / S later.



Portchester Sailing Club

Vectis Rally and Race

Race instructions

1 Rules

The race will be governed by the Portchester Sailing Club 2016 Cruiser Sailing Instructions and the 2016 Dinghy Racing Sailing Instructions which are available from the downloads section of the Portchester SC website. www.portchestersc.org.

2 Eligibility and Entry

The cruiser race is open to all club cruisers and keelboats as defined within the PSC 2016 Cruiser Sailing Instructions and will be sailed using The PSCCH handicap system. The dinghy race will be sailed using the Portsmouth Yardstick Handicap system.

All dinghies must sign on before the race at the Start Hut and sign in when they have returned.

All Cruiser competitors must sign on to race by calling Portchester Race Control on CH37/M1 no later than 5 minutes before the warning signal.

Unaccompanied juniors (under 18 on the day of the race) will need to have a parental consent form completed and handed in to the Start Hut before the race when signing on. Unaccompanied juniors (under 18 on the day of the race) may not sail a single handed boat and must be accompanied in a dinghy by someone over 18.



Portchester Sailing Club

Vectis Rally and Race

Race instructions

Start Line: Between Look Marine Insurance [5K] and a committee boat.

Start time: 11:00 for cruisers Class Flag C
11:15 for dinghies Class Flag H

The Warning Signal will be sounded at 10:55 for cruisers and 11:10 for dinghies.

Finish Line: Between a committee boat and an Orange buoy in Sea Grove Bay.

Course A

Start

KB Dry Stack [5J] (P)

North Sturbridge [5F] (P)

No Mans Land Fort [6A] (S)

Finish

Course B

Start

KB Dry Stack [5J] (P)

Outer Spit [5Q] (S)

No Mans Land Fort [6A] (S)

Finish

All marks of the course can be found by referring to the Eastern Solent race marks chart which may be downloaded from the race instructions section of www.portchestersc.org

Dinghies should sail past the committee boat to be notified of the course to be sailed.

Cruisers the course will be broadcast on VHF Ch37/M1 when signing on.

Time limit 2.5 hours



Portchester Sailing Club

Vectis Rally and Race Support

Race Committee Boat – Rob Shrimpton aboard Le Frais

Responsible for starting and Finishing the Race Inc. coordinating VHF Comms on Channel M

Club Rib – Colin and Alison Manson

Race Dinghy Support and beach ferry service at Seagrove.

Workboat – Gerry Anderson and Ann Sewell

Non Racing Dinghy support



Portchester Sailing Club

Vectis Rally and Race

BBQ

Meet on the beach at Seagrove.

Bring your own BBQ Food / Picnics and drinks.

**We are looking to taking over one club BBQ.
However your own portable / disposable BBQ would be beneficial.**

Bring along some beach games, balls, bats etc.

Don't forget your suntan lotion!



Portchester Sailing Club



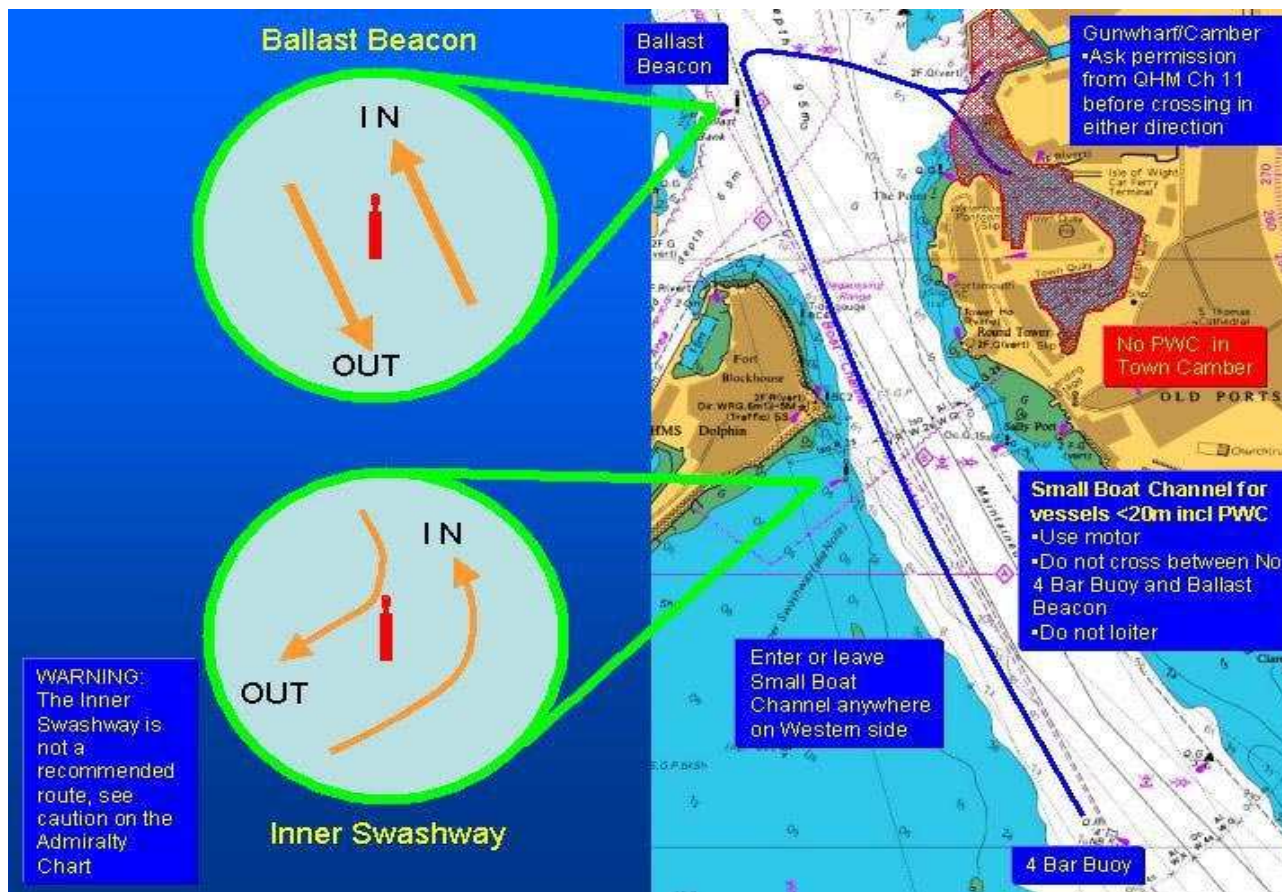
Where are we going?

Sea Grove Bay

Vectis Rally and Race

Harbour Entrance

Where possible
Dinghies to carry a
suitable tow rope.
Pref. 10M long and
min 6mm thick



Outbound

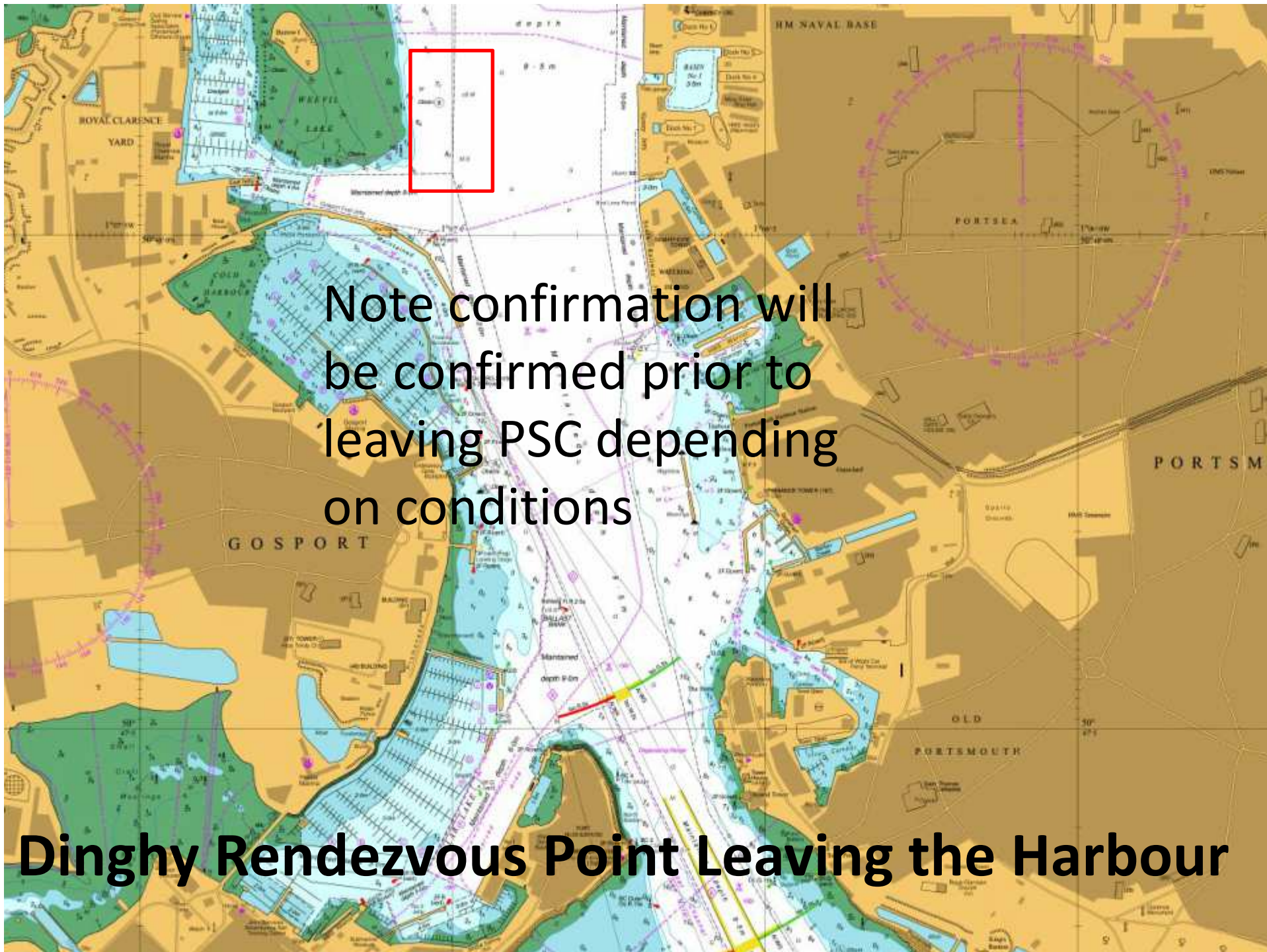
Dinghies meet North of the refuelling pier at Gosport Marina and wait for tow/escort.

Inbound

Dinghies meet at Look Marine Insurance and wait for tow/escort

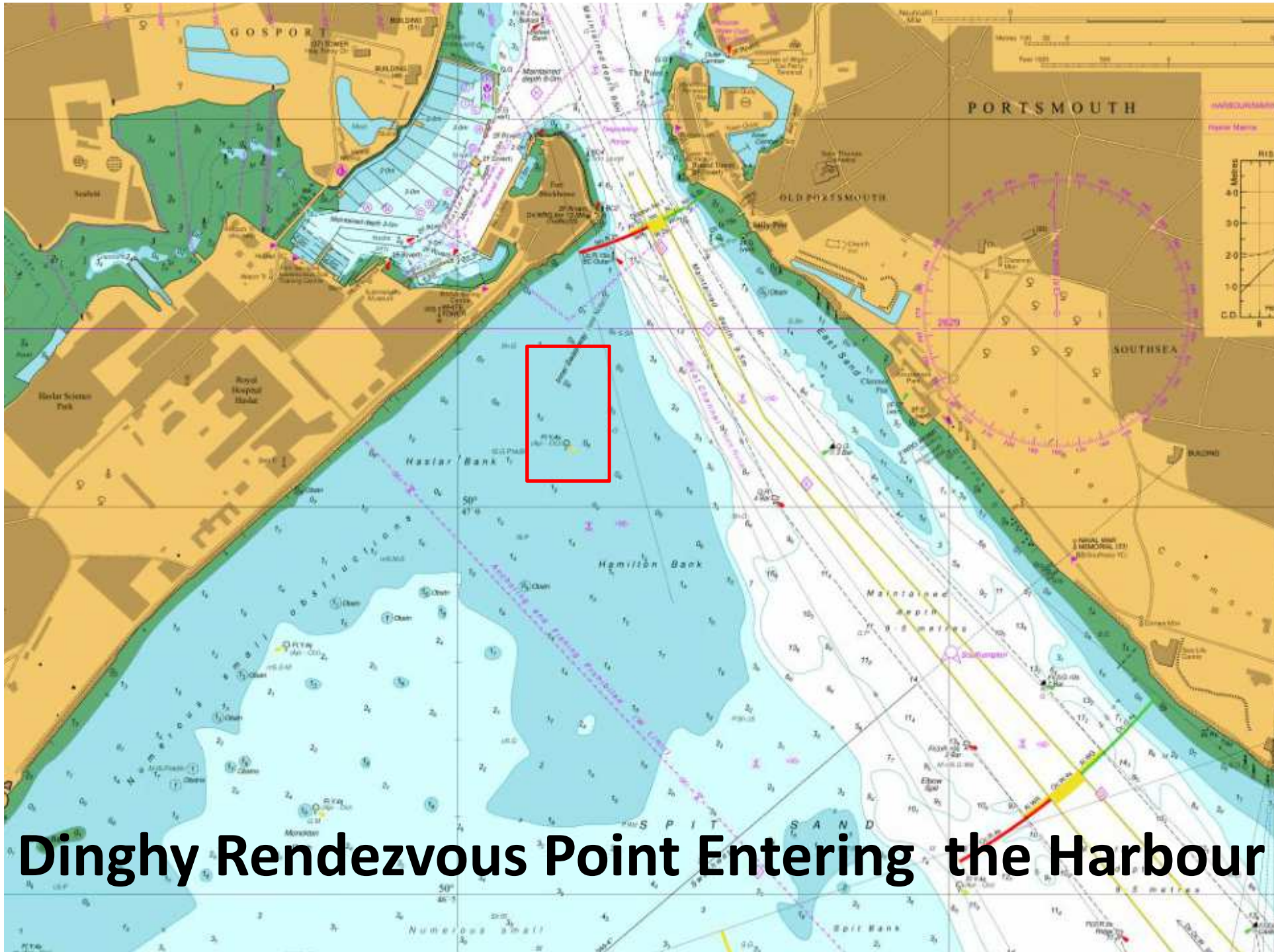


Portchester Sailing Club



Note confirmation will be confirmed prior to leaving PSC depending on conditions

Dinghy Rendezvous Point Leaving the Harbour



Dinghy Rendezvous Point Entering the Harbour





START

Racing Course B

FINISH

How do we get there?

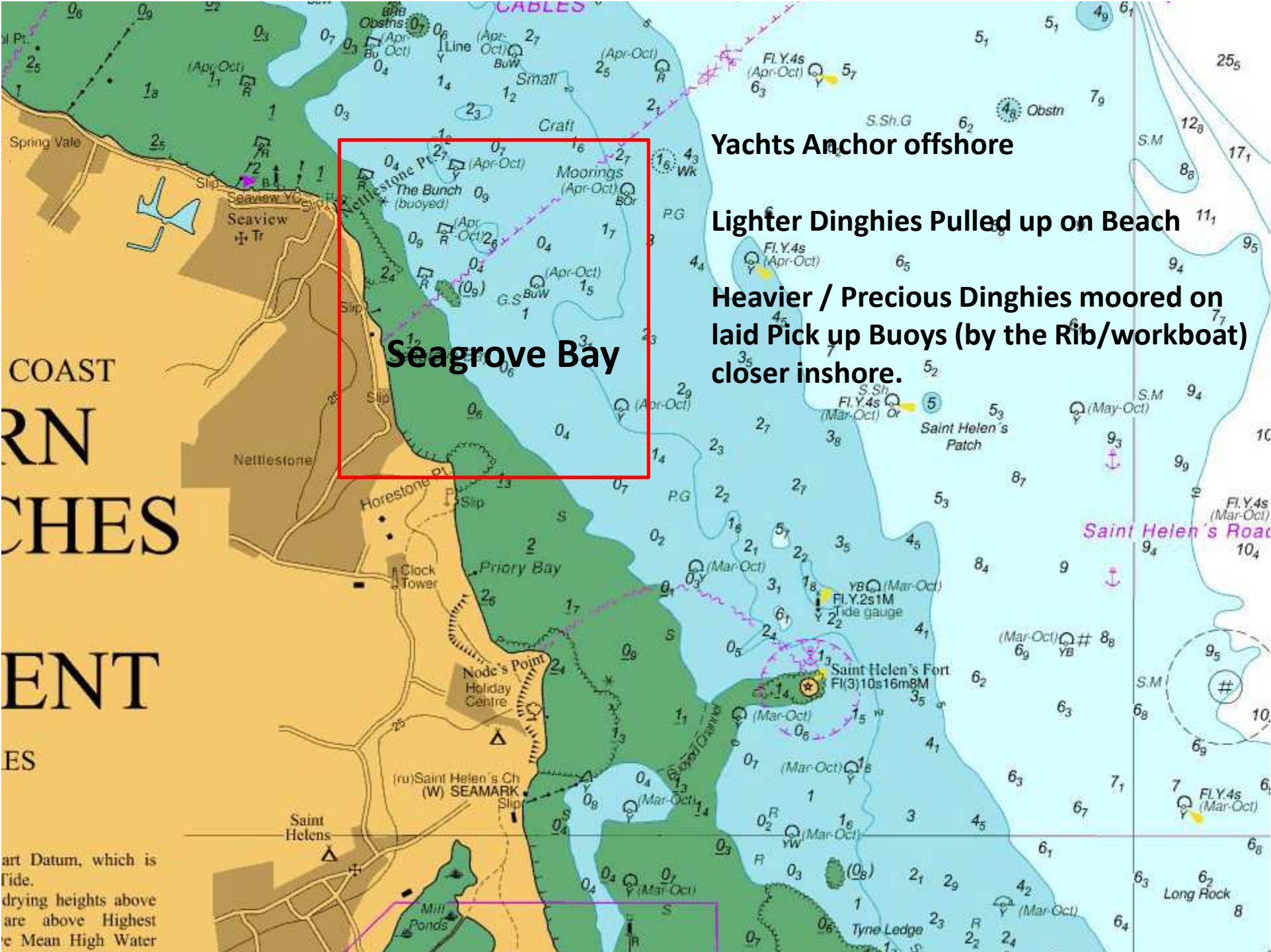


START

Cruising

FINISH

How do we get there?



Yachts Anchor offshore

Lighter Dinghies Pulled up on Beach

Heavier / Precious Dinghies moored on laid Pick up Buoys (by the Rib/workboat) closer inshore.

Seagrove Bay

COAST
RN
CHES
ENT
ES

art Datum, which is
tide.
drying heights above
are above Highest
e Mean High Water

Saint Helen's Road

Saint Helen's Fort
Fl(3)10s16m8M

Long Rock

Vectis Rally and Race

Beach Ferry Service

When all crew members are ready to go ashore contact the rib either visually or call on VHF Ch37/M1.

Please be patient as it is time consuming to get everyone ashore.

Please be ready to speed things up.

Colin and Alison do a great job, we need to ensure they get some beach time too!



Portchester Sailing Club

Vectis Rally and Race

